

ALMAST
mast elevation



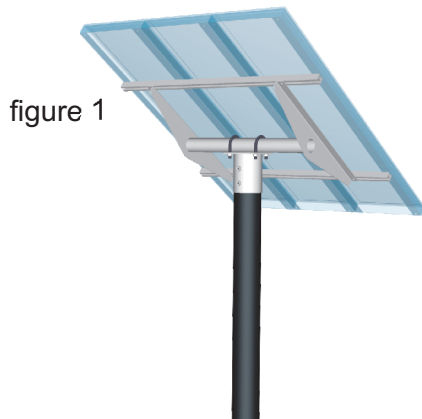


figure 1

ALMAST is a mounting system of the company **ALTEC SOLARTECHNIK** for the assembly of all current photovoltaic modules on a mast at a designated elevation. The adjustability to the point of the compass is provided by a mast cap, which can be fixed at every position designated. According to standard the blade angle is also adjustable by approximately 300° (figure 1).

Furthermore a simpler, less expensive alternative is offered. Here a designated blade angle at the mast cap is permanently adjusted during production (figure 2).

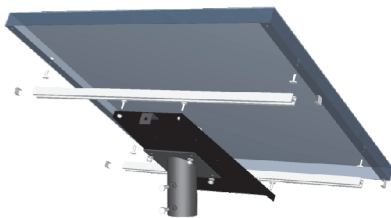


figure 2

Another option to mount module surfaces to a mast is the mounting by cantilever.

Masts are offered, depending on the generators surface, on the height of the mast and on the location of elevation, made of steel, hot-dip galvanised. You can also chose between a mast for husked bases (figure 3) as the more inexpensive alternative and a mast for a single base to be fastened by heavy duty anchor (figure 4).



figure 3

figure 4

In the picture you can see an example for setting up anALMAST plant.



Special constructions with several masts in fixed and adjustable design are possible for almost all established modules and sizes.

