



# Pitched roof-assembly system

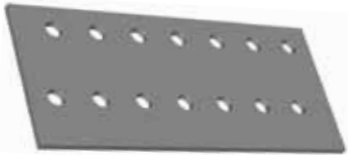
ALSD



# The system solution for pitched roofs



*Roof with shingle roof hooks*



*Base plate*



*Pantile roof hook*

Because pitched roofs can have many variations – our **connection system ALSD** has many possible configurations. It can be individually adapted to every roof.

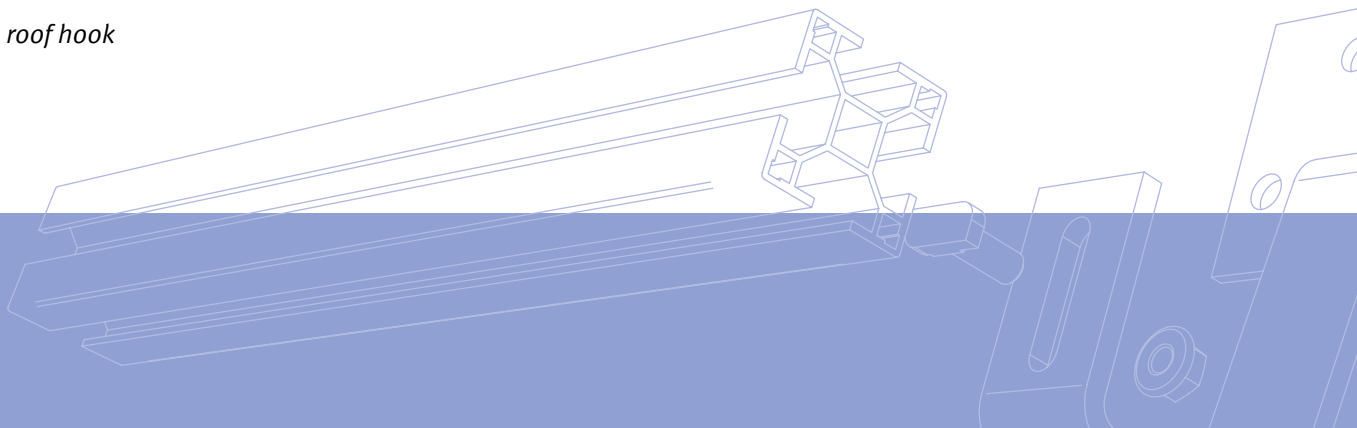
In this application, the modules are attached using an aluminium and stainless steel construction above the existing roof covering. The roof remains almost intact and maintains its water-bearing function. The energy yield of the modules is increased by good ventilation: the temperature build-up behind the modules and subsequent heating is reduced.

The modular construction of our assembly system enables any required system to be constructed from components that are available as single items. Consisting of aluminium extrusions, stainless steel connections and specially designed roof fixings, our system offers a high degree of flexibility in its design and application.

Our mounting solutions are geared to the specific requirements on pitched roofs caused by the condition of the roof structure and the roof pitch.

Individual designs for a variety of pitched roofs are possible. The high quality and durability of our products and the simple assembly of our systems characterises our company.

To guarantee the optimum exploitation of available roof space and to maximise efficiency, we offer an exact planning service. This contains the precise analysis, profit predictions and static load calculations of the complete system.



*vertical assembly*



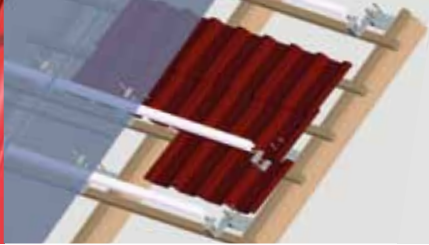
*horizontal assembly*



*individually planned arrangement*



Roof roofing cut



Assembly with roof hooks

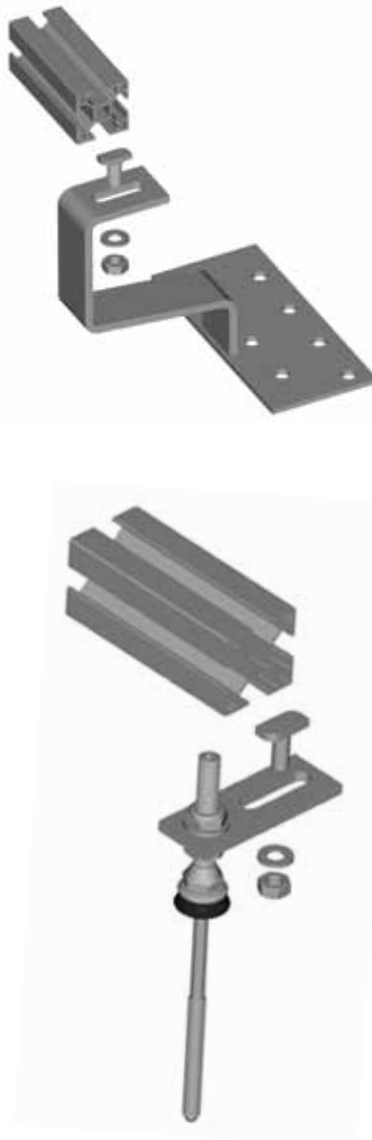


insert the roof hook

To make an enquiry complete our "Check List for Assembly Systems". It helps capture all of the important data from which we will create your individual offer.

#### Advantages

- optimized for all common roofs
- quick and easy assembly
- very cost effective
- corrosion resistance due to the use of stainless steel
- compatible with all of our components for pitched roofs
- statistically calculated construction data
- comprehensive service to calculate performance prior to assembly



Profile rails 40 x 40 mm and pan tiled roof hook, hammer head screws including washer and nuts



Dowel screw for the connection of arrangements on trapezoidal roofings or wave roofings.

Profile rails 40 x 40 mm and solar fastenings for corrugated eternit, with self-tapping thread, adapter plate, hammer head screws, washers and nuts



Construction with pan tiled roof hooks



**ALTEC**  
Solartechnik AG  
Industriegebiet 1  
07924 Crispendorf

Phone 03663 4210-0  
Fax 03663 4210-211  
info@altec-solartechnik.de  
www.altec-solartechnik.de