

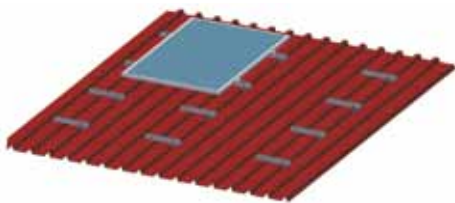


**Trapezoidal roof mounting**  
for elevations and arrangements parallel to roof

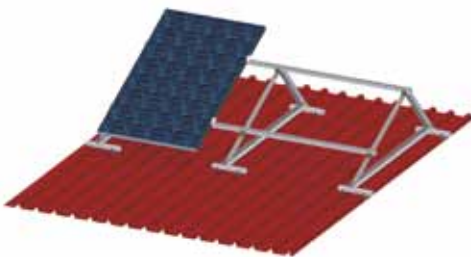
# The flexible trapezoidal roof fixing



*Functional way of the connection*



*Use parallel to the roof*



*Use of elevated*

This newly developed fastening is the solution for nearly all PV module assembly requirements on trapezoidal roofing. Consisting of stainless steels (1.4301) it is fixed with 2 self-drilling screws (A2 6.3 x 25) and is then ready to mount the aluminium rails and then the complete PV system. A factory-attached EPDM tape is used to seal the roof and the resulting screw holes.

This fastening provides new opportunities when compared to our usual trapezoidal shoe, which is manufactured specifically for each roof dimension. It is versatile: the fastening is suitable for trapezoidal profiles with an angle between 30 and 84 degrees. Furthermore, it works regardless of the bead width. The module assembly may vary depending on the roof pitch to be either parallel to the roof or elevated.

Due to the material savings and the use of short rail sections, this type of installation is very cheap and can be delivered at short notice. We offer this system as individual parts or as an assembly. The set consists of two fasteners with EPDM tape and four drilling screws and a 450mm length of standard DC 40 x 40 rail.

Ask for our checklist for installation on trapezoidal roofs. It helps capture all of the important data by which we will create your individual offer. We will gladly send you a price list of all the default options offered in our range.

Talk to us!



*Screw connection with the roof*



*Substructure with standard profile rail*



*Module assembly*

**ALTEC**  
Solartechnik AG  
Industriegebiet 1  
07924 Crispendorf

Phone 03663 4210-0  
Fax 03663 4210-211  
info@altec-solartechnik.de  
www.altec-solartechnik.de